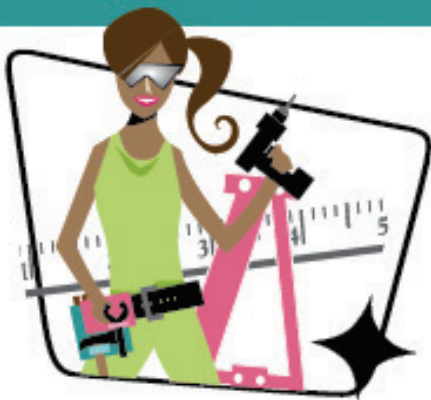




## Destination: How To EBSCO Auto Repair Reference Center



### Explore EBSCO Auto Repair Reference Center

Find repair information, wiring diagrams and more for most domestic and imported vehicles, some over 50 years old!

Find this destination's Travel Guide on the reverse side.



## Your Info Travel Guide




## EBSCO Auto Repair Reference Center

Visit EBSCO's Auto Repair Reference center from the library or home.

For home access, enter your library card number and PIN (usually the last four digits of your phone number).

### From the Research Room at [slcolibrary.org](http://slcolibrary.org)

- 
- Click **How To** in the left menu, or;
  - Click the **How To** icon.
  - Click **EBSCO Auto Repair Reference Center** under "Premium Resources."
  - Click **Auto Repair Reference Center** on the next screen.
  - Select your vehicle's year.
  - Select your vehicle's make.
  - Select your vehicle's model.
  - Select a sub-model if prompted.
  - Choose from your vehicle's available topics, such as **Service Bulletins and Recalls**.
  - If **Repair Procedures** is listed, select a repair type on the next screen's left menu to view expanded information.

### Destination Highlights:



#### Service Bulletins and Recalls

- Ensure your vehicle's safety and performance.

#### Labor Calculator

- Estimate repair costs.

#### Vehicle Specifications

- Find your vehicle's horsepower at 4,400 rpm, fuel capacity and more.

#### Maintenance Intervals

- View the manufacturer's suggested maintenance schedule.

#### Other Information

- Review care and repair tips, videos about autos for beginners, etc.